



Operating from USA UK AUS IND

Far Edge S1K

Solving Information
Technology's **Complexity**

Authorised
Hyperscalers
Partner



Technology Partners



What we do



Hyperscale x86

In use by macroserviceproviders



Tier 1 Original x86

Used or planned for use by Tier 1 OEM



IP-Appliance Design

Productize delivery of your Digital-IP



Lab as a Service

Test drive our appliances with LaaS



End User Devices

Gamingbooks, Chromebooks, and Notebooks

Who are our customers

“ Next-Gen Open OEM Solving Information Technology’s Complexity ”

Telco



T TELSTRA

Celestica

nbn

OEM



Hewlett Packard Enterprise

JetStor
Storage. Solutions. Support.

PATH

SI



accenture

Storage Data
COMPUTE & STORAGE SOLUTIONS

viadex

Cloud



6YS CLOUD COMPUTING SPECIALISTS

Spectrum
NETWORKS

prophecy

Digital IP



redhat

DYNAMISOR

avanade

MSP



genisys

forwardIT

cbit

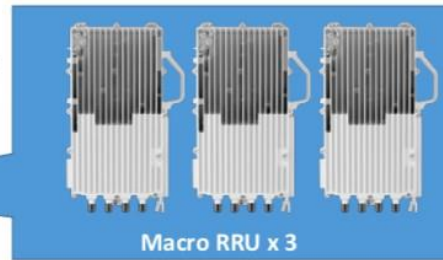
S1K (Outdoor Edge Server)



Typical macro base station



Room is not required any more

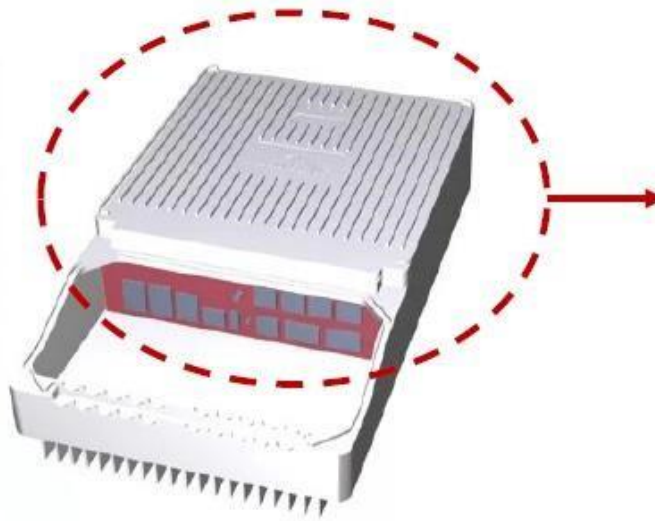
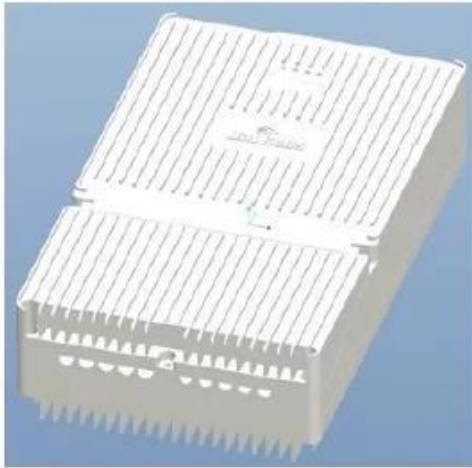


Outdoor DU projection 2019-2022

Region	MNO	RAT	Projection
South America	Telefonica	LTE	4K/Y
India	RJ, Airtel	LTE	6K/Y
Japan	Rakuten	LTE first	3K/Y
Africa	Vodafone	LTE	3K/Y
Others	CMCC, Sprint, vertical,...	LTE first	5k/Y
Total			21k/Y

Appearance and Interface

Appearance & Interface



- ❑ Intel® Xeon® Processor D-1500 Product Family
- ❑ Abundant expansion options (PCIe Gen3 X16)
- ❑ Two SATA M.2 SSD & One PCIe Gen3 X4 M.2 SSD
- ❑ Dual-CH DDR4, max 32GB
- ❑ Fanless operating temperature -40°C to +55°C

Specifications

Item	Description
Processor	<ul style="list-style-type: none">• Intel Xeon processor D-1548 8-core@2.0GHz• Intel Xeon processor D-1567 12-core@2.1GHz
Memory	Up to 32GB DDR4 (Dual-CH with ECC)
Network	<ul style="list-style-type: none">• 4 x 10G SFP+• 2 x 1G RJ45• USB 2.0: 1 Ports for Debug serial port• USB 3.0: 1 Ports Optional
Storage	2 x M.2 SSD (SATA) Support Soft Raid 1 x M.2 SSD (PCIe X4) DDR&SSD adopts socket + screw fixation or SMT to meet the requirements of heat dissipation and shock resistance
Expansion Slot	Supports one 50W x16 PCIe 3.0 (8GT/s) card: Full height, ¾ length form factor
System Management	Supports IPMI Specification 2.0, including: <ul style="list-style-type: none">• Monitor critical components• Remote control capability• Firmware update• 1 x RJ45 10/100/1000Base-T for IPMI access



Specifications

Item	Description
Power Supply	1 x 240W Dual input feeds DC(-36V DC to -57V DC) Support single or double input is optional and external AC/DC power module can be used to support AC application scenarios.
Accelerator Card (optional)	FPGA: Xilinx RFSOC XCZU21DR PCI Express Gen3 X16 Full height, ¾ length GPS 1588 V2: Master & Slave 25GE: 4 Ports(SFP28) Supports BMC Remote control
Dimension	* (H) x *(W) x * (D)
Weight	< *kg

Environmental Specification

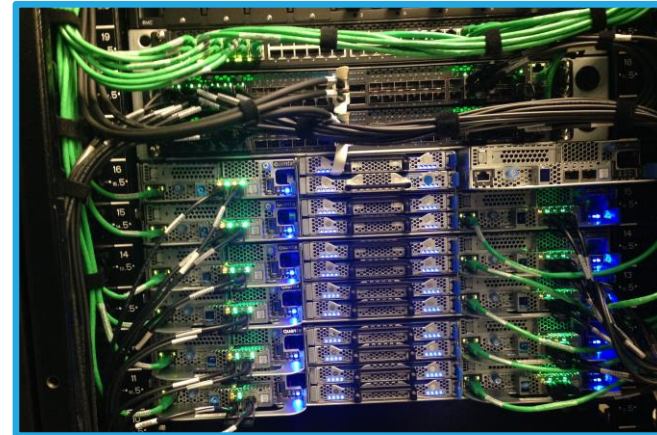
Item	Description
Operating Temperature	-40°C to 55°C
Relative Humidity	5% RH to 100% RH
Absolute Humidity	1 g/m ³ to 30 g/m ³
Atmospheric Pressure	70 kPa to 106 kPa
Operating Environment	standards-compliant: <ul style="list-style-type: none">• 3GPP TS 45.005• 3GPP TS 25.141• 3GPP TS 36.141• 3GPP TS 37.141 ETSI EN 300019-1-4 V2.1.2 (2003-04) Class 4.1: "Non-weather protected locations."
Seismic Specification	NEBS GR63 zone4
Ingress Protection Rating	IP65

Power Budget

	Item	Power (w)	Qty	Utilization	Total (w)
MB	Broadwell-D (65W)	65	1	100%	65
	Memory (on board)	8	2	80%	12.8
	M.2 SSD (PCIe)	15	1	80%	12
	M.2 SSD (SATA)	15	2	80%	24
	FPGA	75	1	80%	60
	10G switch (BCM53402)	6.4	1	80%	5.12
	I210	1.25	2	80%	2
	BMC AST2500	1.4	1	80%	1.12
	Heater	30	1	80%	24
	Others (Misc)	5	1	80%	4
	MB power		1		210.0
	Consider brick eff 0.9		1		233.4

Where to from here..?

P +61 1300 113 112
E info@hyperscalers.com
www.hyperscalers.com



“ Become the solution
your customers need ”

Join our partner program TODAY



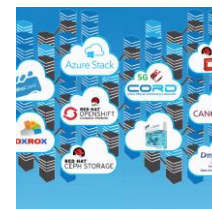
[BareMetal & Ethernet Switches](#)



[Hyperscale x86](#)



[Tier 1 Original x86](#)



[Lab as a Service LaaS](#)



[IP Appliance Design Process](#)



[CPU RAM SSD HDD NVMe](#)



[Notebooks Touchpads Chromebooks](#)



[Services and Support](#)



[Education Whitepapers](#)



[Training Videos](#)